



IMPORTING CONTROL FROM ANOTHER APPLICATION

TheoLt can Import text files containing control (station positions). These files may be comma, tab or space delimited. See example file Right.

Be sure to create/set a new project.

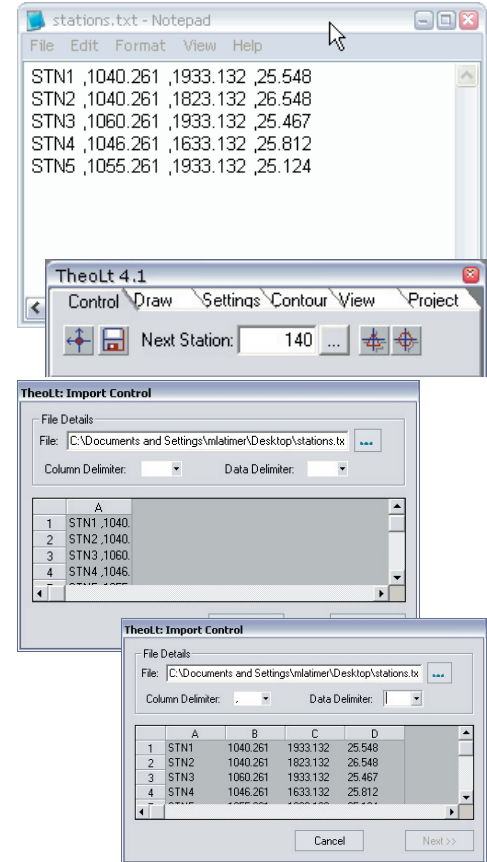
Select the **[Control]** Tab.



Select **[Import Control]** button

Click the **[Browse] [...]** buttons to select the station text file. The file will appear in the lower window in a single column (all grey).

To select the Column delimiter (in this file, a comma), ensure the Data Delimiter is empty. The file should spread to multiple columns as shown.





Finally the columns need to be defined. Right-Click on the column heading and select the field type. In this case, column A is the station target (station to insert).

Repeat for the Easting (X), Northing (Z) and Height (Z) fields.

As each column is assigned, the background will change from grey.

The Easting Northing and Height Columns must be assigned along with the Station Target.

Click **[Next]** .

The stations will be imported and listed in the **Station List** windows.

